

Testing Services

Performance Requirements

- Electrical characteristics
- Photometric characteristics
- Chromaticity co-ordinates
- Test for Lumen maintenance and Life
- Endurance Test
- etc.

Safety Requirements

- Temperature measurements
- Resistance to moisture
- Insulation Resistance and Electric Strength
- Mechanical Strength
- Resistance to heat, Fire and tracking
- Abnormal and Fault Conditions
- etc.

Degrees of protection provided by enclosures (IP Code)

Photometric Measurements



Life test



Dust chamber



Apparatus for making and breaking capacity and normal operation test

Products Covered and Standards

Luminaries

- Fixed general purpose luminaries, Recessed luminaries, Luminaries for road and street lighting, Portable general purpose luminaries, Flood lights, Luminaries for emergency lighting.

TIS 902, TIS 903, TIS 904, TIS 905, TIS 906, IEC 60598, International Commission on Illumination (CIE) etc.

Lamps

- Tungsten, fluorescent, compact fluorescent

TIS 4, TIS 236, TIS 687, TIS 956, IEC 60064, IEC 60081, Energy Label No.5 (EGAT), major standards & Client's requirement etc.

Lighting Accessories

- Electronic ballast, Magnetic ballast, Starter, Lamp holder, Starter holder, Switch, Plug and socket outlet

TIS 23, TIS 166, TIS 183, TIS 344, TIS 824, TIS 885, TIS 1506, IEC 60921, IEC 61347-2-3, IEC 61347-2-8, IEC 60929, IEC 60884-1, IEC 60155, IEC 60400, IEC 60669, IEC 60529 etc.



Electronic ballast testing

Photometric Measurements

■ Integrating Sphere Tester

- Photometric Characteristics
- Luminous Intensity
- Chromaticity co-ordinates

Test according to National Standards (TIS), IEC, Energy Label No.5 (EGAT) and major standards & Client's requirements

■ Goniophotometer

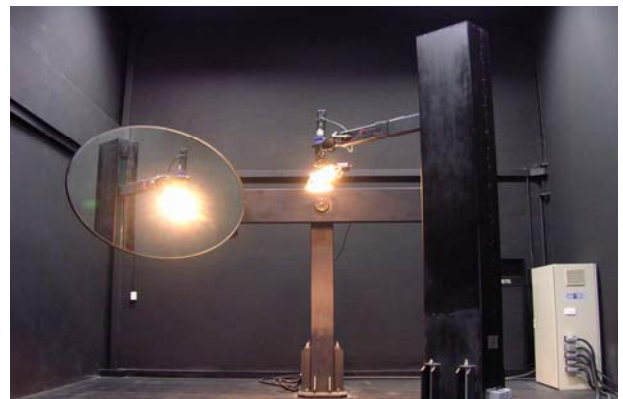
- Absolute luminous flux of bare lamps
- Relative intensity distribution of luminaire in C- γ geometry
- Absolute intensity distribution of luminaire in C- γ geometry
- Relative intensity distribution of luminaire in B- β geometry
- Absolute intensity distribution of luminaire in B- β geometry

Photometric Reports

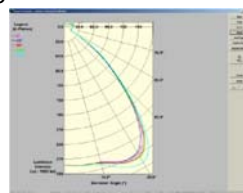
- ☞ Luminous Intensity Distribution (LID)
- ☞ Lowest 10 % LID
- ☞ Luminous intensity data
- ☞ Luminous flux table
- ☞ IsoCandela diagram
- ☞ Average luminaire luminance table
- ☞ IsoLux diagram
- ☞ 3D Lux Web
- ☞ Illuminance grid
- ☞ IESNA coefficient of utilisation table
- ☞ TM5 utilisation factor table
- ☞ TM5 (variation) table
- ☞ Utilisation factor diagram
- ☞ Zonal flux diagram
- ☞ Luminance limiting curve



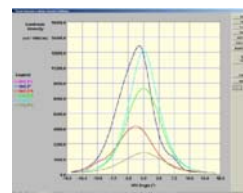
Integrating Sphere Tester



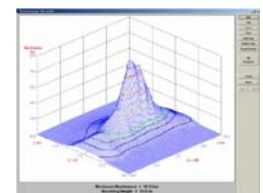
Goniophotometer



*LID : Polar Curve
(Type C)*



*LID : H-V Curve
(Type B)*



3D Lux Web

For more information, please send your queries or contact us at the following:

ELECTRICAL AND ELECTRONICS INSTITUTE

Operation and Standards Center

Bangpoo Industrial Estate, Soi 8,
975 Moo.4, Sukhumvit Rd., Km.37,
Praeksa, Muang, Samutprakarn 10280

Telephone
(662)709-4860-8 ext.126, 130

Telefax
(662) 324-0917- 8

Web site : <http://www.thaieei.com>

E-mail : marketing@thaieei.com, light@thaieei.com